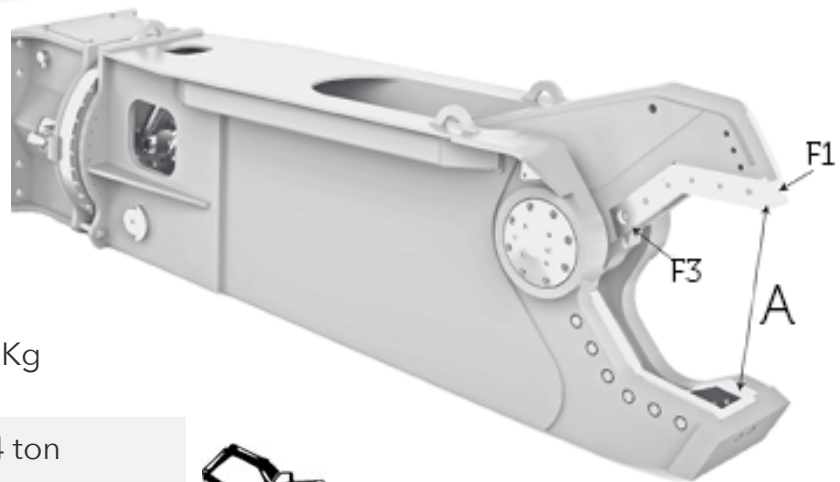


SC700

SC series



Technical Specification



Shear weight 795 Kg

Carrier's weight (Stick) 8/14 ton

Carrier's weight (Boom) 5/8 ton

Max jaws opening (A) 415 mm

Rotation oil flow (min/max) 5/8 l/min

Rotation pressure 120 bar

Opening/closing oil flow 90/100 l/min

Opening/closing oil pressure 280/320 bar


Throat force (F3) 210 ton

Tip force (F1) 60 ton


Rotation 360° Hydraulic



CUTTING DATA

 120 mm

 100 mm

 40 mm